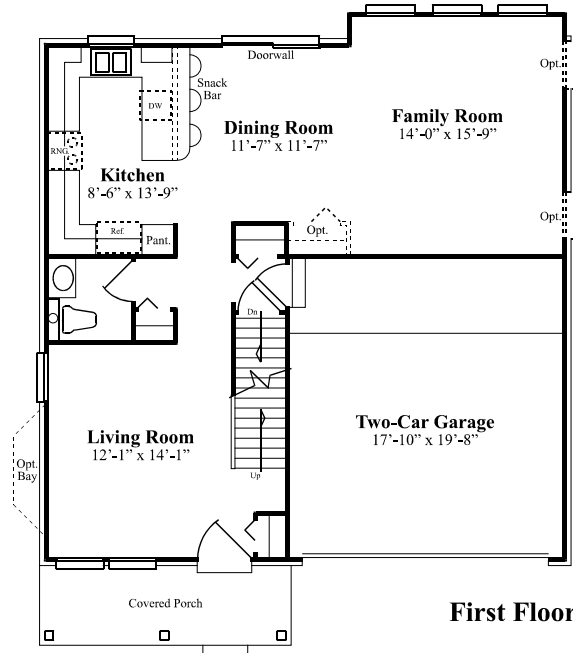
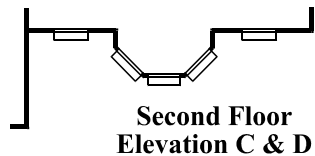
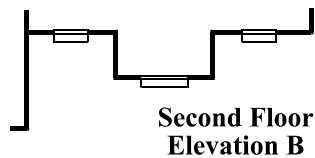
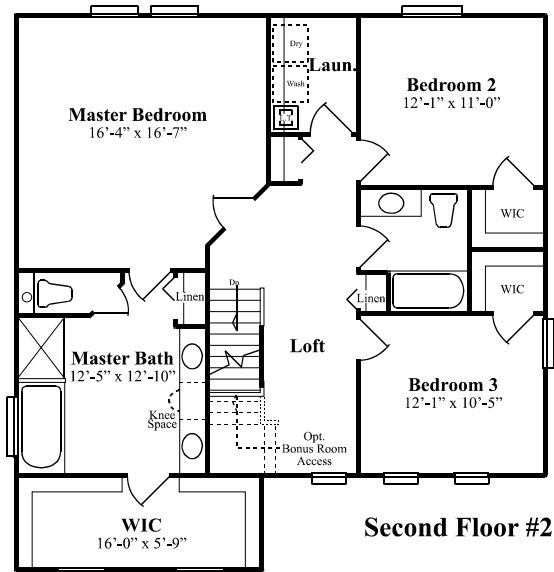




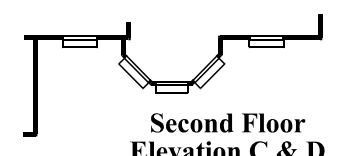
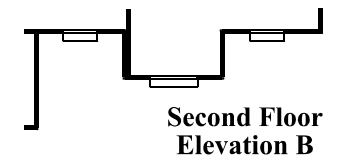
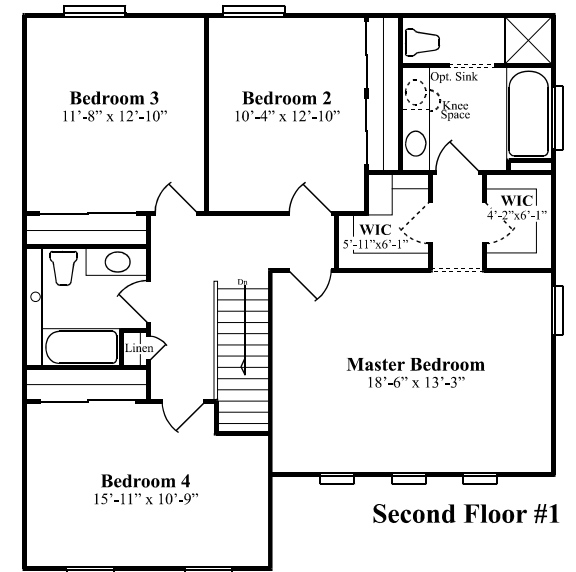
**COTTAGES**  
AT MILL RIVER

**FLOOR PLANS**

THE  
*Palmer*



**First Floor**



(248) 437-4924 [www.millriverhomes.com](http://www.millriverhomes.com)

Palazzolo Bros/Mill River L.L.C. Presented By:



Copyright Palazzolo Bros/Mill River Investors L.L.C. Exclusive rights of the copyright owner are enforced.

All information contained herein was accurate at the time of publication. In order to maintain the high degree of quality and incorporate management with greater facility and economy, we reserve the right to make changes in price, features, specifications, materials or to change or discontinue models without notice or obligation. Rendering and photographs are artist's conception and are only representative.

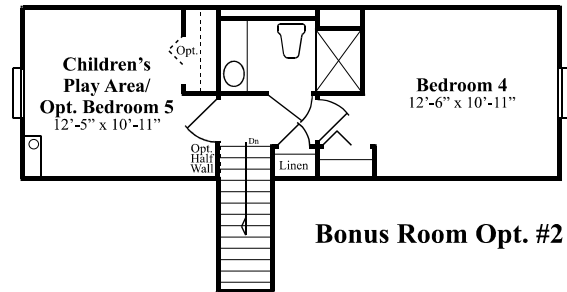
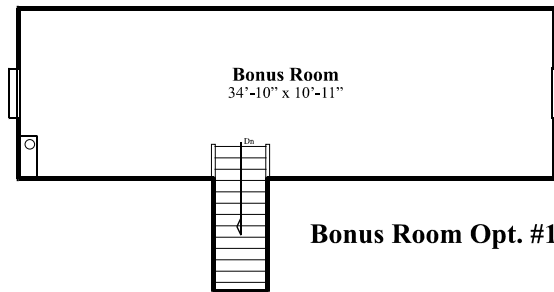




**COTTAGES**  
AT MILL RIVER

**FLOOR PLANS**

THE  
*Palmer*



(248) 437-4924 [www.millriverhomes.com](http://www.millriverhomes.com)

Palazzolo Bros/Mill River L.L.C. Presented By:



Copyright Palazzolo Bros/Mill River Investors L.L.C. Exclusive rights of the copyright owner are enforced.

All information contained herein was accurate at the time of publication. In order to maintain the high degree of quality and incorporate management with greater facility and economy, we reserve the right to make changes in price, features, specifications, materials or to change or discontinue models without notice or obligation. Rendering and photographs are artist's conception and are only representative.

